

Closet #1, Parsons Kitchen

Allan Wexler Studio, 1994

Allan Wexler's Closet #1, Parsons Kitchen addresses the prefabrication of place by providing a mixed program of workstation and kitchen. Reminiscent of the Hoosier Kitchen Cabinet and the Wooton Patent Office Secretary, the 1994 kitchen was commissioned by Parsons The New School for Design architecture program with funds from Wilson Art.¹ A cross between architecture and sculpture, it is a functional work from Wexler's Closet Architecture series, which included the 1991 Crate House and the 1991 Rebuilt Braun Coffee Maker and investigated reducing our lives into a kit of parts. Not a traditional kitchen environment, the Parsons Kitchen functions as the meeting space and bar for public events and receptions in the current School of Constructed Environments at Parsons The New School for Design.



Closet #1 is the primary element of four crates (the other elements have since been removed) and was originally inspired by the discovery of a small hidden space behind a wall in the lobby of the architecture department; the negative space of this area became its form. The kitchen, when closed, is 3 feet 9 inches by 6 feet 3 inches by 7 feet 2 inches (1.1 by 1.9 by 2.2 meters) and is fabricated of construction-grade plywood with laminate on select surfaces.² This project is not meant to be mass-produced; rather, its form is derived from the specificity of its site and its irregularities. Constructed like a storage crate, the kitchen fills the void within the wall when not in use; and rolls out and unfolds into a service element, reception area, and meeting space when needed.

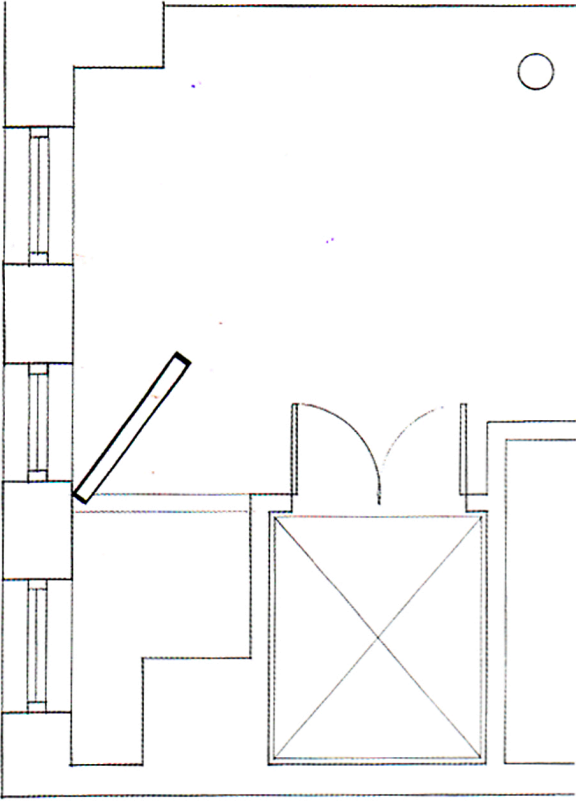
Allan Wexler storing the Parsons Kitchen in the lobby's wall void

Parsons Kitchen expanded

Additional kitchen closet units

Detail





Process diagram 1

Process diagram 2

Process diagrams 3, 4, 5, 6

